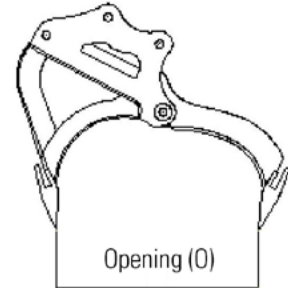
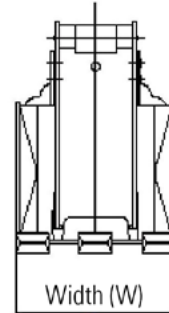
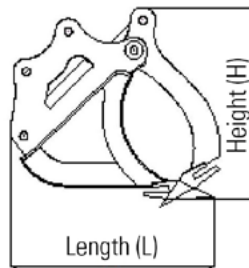


MULTI-GRAB BUCKET

Excavator Attachment

The RAMRADE Multi-Grab Bucket is a highly durable, heavily constructed bucket with a 'hydraulic thumb' fitted for extra functionality. It allows the operator to pick up items and still move within the full crowding area of the excavator.



Specifications	Unit	MGB030	MGB050	MGB060	MGB120	MGB300
Weight	Kg	150	280	450	730	2480
L	mm	820	960	1090	1390	1900
W	mm	910	1160	1350	1680	2430
H	mm	715	880	975	1210	1730
O	mm	300	450	500	650	950
Pressure	Kg/cm ²	108 ~ 127	110 ~ 150	110 ~ 170	150 ~ 170	160 ~ 210
Carrier	Tonne	2 ~ 4	4 ~ 6	6 ~ 8	8 ~ 13	33 ~ 39

KEY FEATURES

- Size range to Suit 2.5 to 50 Tonne Excavators
- Designed for Extreme Conditions
- Excellent Crushing and Holding Pressure
- Specially Designed Swing Bearings for Durability
- Heavy duty, High Performance Hydraulic Ram
- Tried and Tested in Australian Conditions
- Removable Teeth