

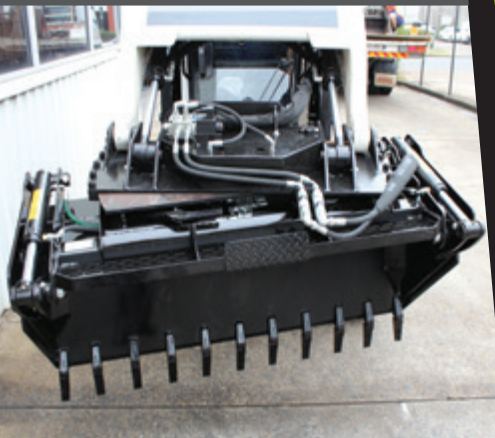
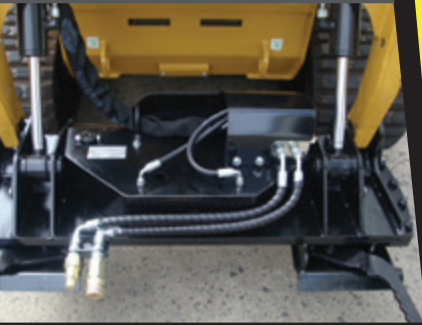
**MOVING** the earth for **you**<sup>TM</sup>

**NORM**  
ENGINEERING

## TILTING HITCHES

Manufacturer of  
Earthmoving Attachments for:

Skid Steer Loaders  
Backhoes  
Excavators



**07 3376 3177**

- The Norm Tilting Hitch is an industry leading attachment
- By replacing the machines standard quick attach frame the Tilting Hitch allows the operator to have radial control over any attachment that is on the machine
- Available with optional hydraulic locking pins eliminating the need for the operator to ever leave the cabin
- This is ideal for attachments stored high in purpose built trailers or operators that simply change attachment frequently
- The Norm Tilting Hitch replaces the loaders original fast attach frame and therefore the reduction in breakout force and machine stability is minimal due to the unique compact design

[sales@normeng.com.au](mailto:sales@normeng.com.au) • [www.normeng.com.au](http://www.normeng.com.au)

### MELBOURNE

Ph: 03 9775 1965  
Fax: 03 9770 8054  
3/90 Colemans Road  
Carrum Downs VIC 3201

### BRISBANE

Ph: 07 3376 3177  
Fax: 07 3376 3201  
21 Spine Street  
Sumner Park QLD 4074